



**14, Regent Street**  
Tipton, DY4 9HH

**Offers in the region of £150,000**

**\*\*\* SEMI DETACHED BUNGALOW \*\*\* WELL PRESENTED  
THROUGHOUT \*\*\* ONE DOUBLE BEDROOM \*\*\* HIGHLY  
DEMANDED LOCATION \*\*\* EARLY VIEWING ADVISED \*\*\* NO  
UPWARD CHAIN \*\*\***



This is a well presented one bedroom semi detached bungalow offered with no upward chain that must be viewed to be appreciated.

Located in the highly demanded area of Tipton with walking distance to local schools, shops, amenities, excellent public transport links and easy access to motorway networks.

The spacious bungalow briefly comprises of; entrance porch, lounge, kitchen, inner hallway, bedroom and a modern family bathroom.

To the rear is an enclosed garden and communal parking is available.

Call us to secure your early viewing!

**EPC: TBA**

**Council Tax Band: A**

**Tenure: FREEHOLD**

**Entrance Porch**

**Lounge 14' 6" x 10' 0" (4.42m x 3.05m)**

**Kitchen 12' 8" x 8' 1" (3.86m x 2.46m)**

**Inner Hallway**

**Bedroom One 12' 4" x 9' 10" (3.76m x 2.99m)**

**Bathroom**







**TENURE: Freehold.** References to the Tenure of this property are based upon information supplied by the seller. The Agents has not had sight of the Title documents. A buyer is advised to obtain verification from their Solicitor.

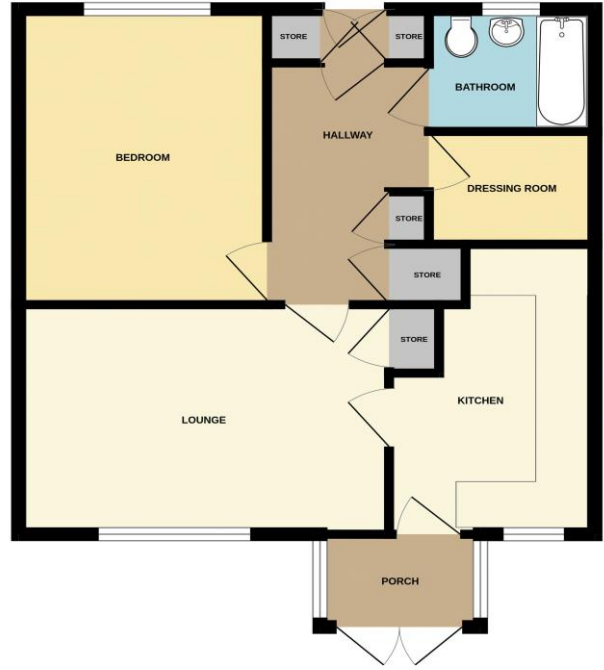
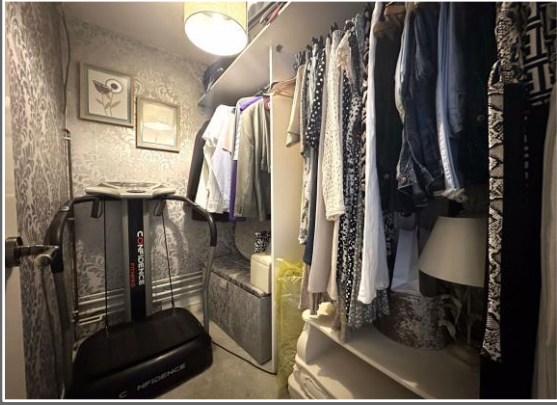
**FIXTURES & FITTINGS:** All fixtures and fittings other than those mentioned within these particulars are expressly excluded, although agreement on certain items may be reached separately with the vendor.

**PROPERTY MISDESCRIPTION ACT 1991** The Agent has not tested any apparatus, equipment, fixtures and fittings or services so cannot verify that they are connected, in working order or fit for the purpose. A buyer is advised to obtain verification from their solicitor or surveyor.

**NOTICE** These particulars, although believed to be correct, do not constitute any part of an offer or contract. All statements contained in these particulars as to this property are made without responsibility and are not to be relied upon as statements or representations of warranty whatsoever in relation to property. Any intending purchaser must satisfy themselves by inspection or otherwise as to the correctness each of the statements contained in these particulars. All measurements are approximate and for illustrative purposes only. Photographs are produced for general information and it must not be inferred that any item shown is included in the sale.

As a professional Estate Agency our clients employ us to look after their best interests. This includes providing them with full details of offers made to purchaser their property. To ensure our obligations to our clients are met we need to check the status of all potential purchasers. If you make an offer on this property, we will ask a member of Mortgage Brothers Ltd to contact you to verify your status. They are a leading firm of Independent Financial Advisers and Mortgage Brokers.

Mortgage Brothers Ltd are authorised and regulated by the Financial Conduct Authority (FCA). Not all mortgages are regulated by the FCA. Your home may be repossessed if you do not keep up repayments on your mortgage or other loans secured on it.



Whilst every attempt has been made to ensure the accuracy of the floorplan contained here, measurements of doors, windows, rooms and any other items are approximate and no responsibility is taken for any error, omission or mis-statement. This plan is for illustrative purposes only and should be used as such by any prospective purchaser. The services, systems and appliances shown have not been tested and no guarantee as to their operability or efficiency can be given.  
Made with Metropix ©2023



0121 520 2255

greatbridge@skitts.net